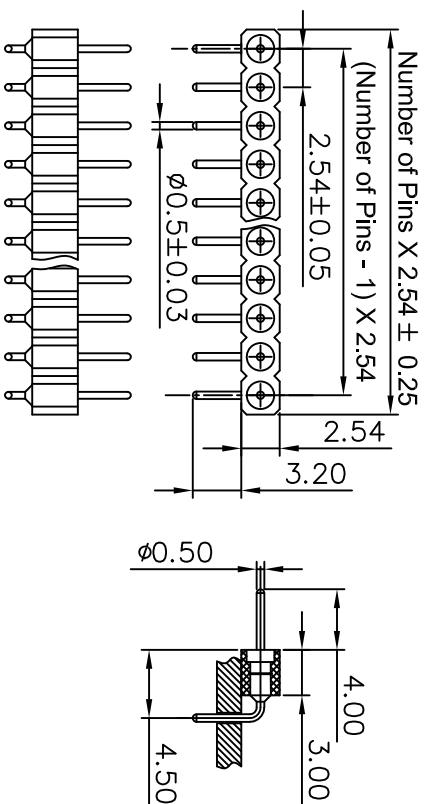
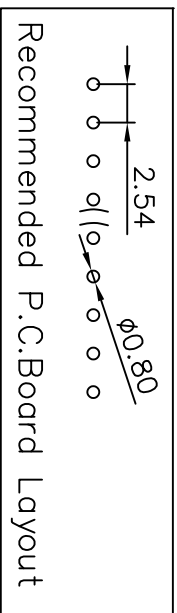


REV. NO.	REVISION NOTE	REVISER	DATE
V0	NEW DRAWING		2023/02/24



Technical Specs:

- Insulator: Black glass filled polyester PPS-GF30-FR
- Flammability: UL 94V-0
- Sleeve: Brass CuZn36Pb3 (C36000)
- Mechanical life: min 500 cycles
- Rated current: 3 A
- Contact resistance: max 20 Milliohms
- Dielectric strength: min 1000 V RMS
- Coplanarity SMDterminations: max 0.1 mm
(measured on 25 mm long connectors)



Recommended P.C.Board Layout

		深圳市新世联电子有限公司 TEL: +86 (755) 29912370 FAX: 29912372	
Http://www.ciscom.com		2.54MM PIN排针 RA	
Tolerance Unless Otherwise Specified		Title	
.X ~ ±0.30	⌀	Units	Scale
.XX ~ ±0.25	□	mm	2:1
.XXX ~ ±0.20		Date	Reviewed By
Angle ~ ± 3°		2023/02/24	Date
		Drawing By	Approval By
			Date