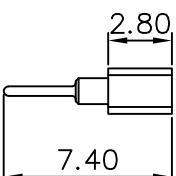
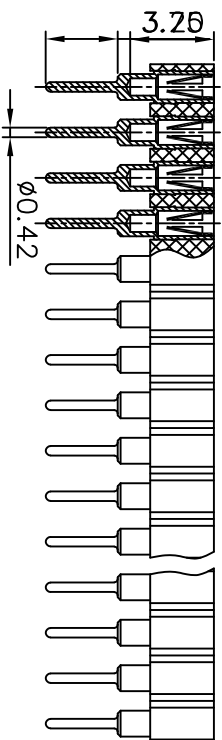
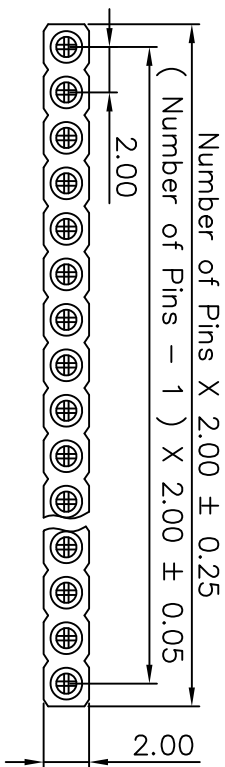
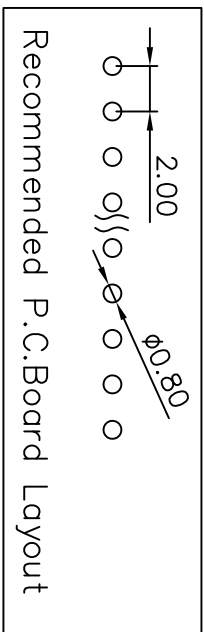


REV. NO.	REVISION NOTE	REVISER	DATE
V0	NEW DRAWING		2023/02/22



**Technical Specs:**

- Insulator: Black glass filled polyester PPS-GF30-FR
- Flammability: UL 94V-O
- Sleeve: Brass CuZn36Pb3 (C36000)
- Contact clip (4 finger): Beryllium copper (C17200)
- Mating pins: Outside Diameter 0.43 to 0.56 mm
- Forces: (polished steel gauge 0.51 mm)
- Insertion: 2 N typ.
- Withdrawal: 1 N typ.
- Mechanical life: min 500 cycles
- Rated current: 3 A
- Contact resistance: max 20 Milliohms
- Dielectric strength: min 1000 V RMS



4

3

2

1

<a href="http://www.ciscomn.com">Http://www.ciscomn.com</a>		深圳市新世联电子有限公司 TEL:+86(755)29912370 FAX:29912372	
Tolerance Unless Otherwise Specified		Title 2.0MM圆PIN排母 DIP	
.X ~ ±0.30	⊙	Units mm	Scale 2:1
.XX ~ ±0.25	□	Date 2023/02/22	REV NO. V0
.XXX ~ ±0.20	∠	Angle ± 3°	Reviewed By Date
		Drawing By	Approval By Date