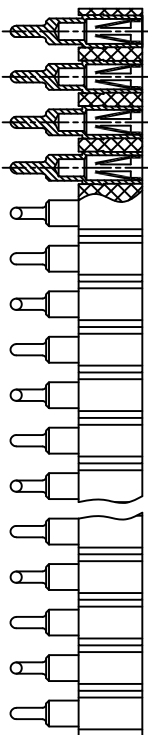
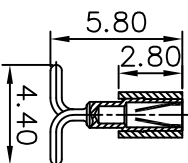
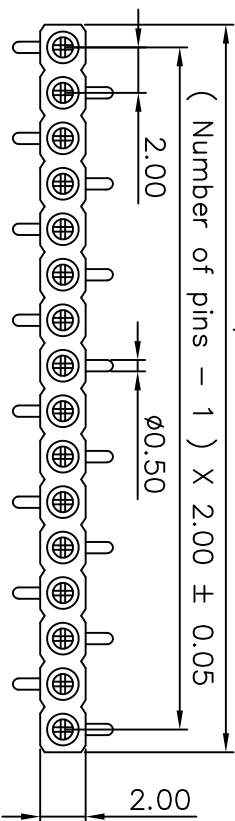


REV. NO.	REVISION NOTE	REVISER	DATE
V0	NEW DRAWING		2023/02/22

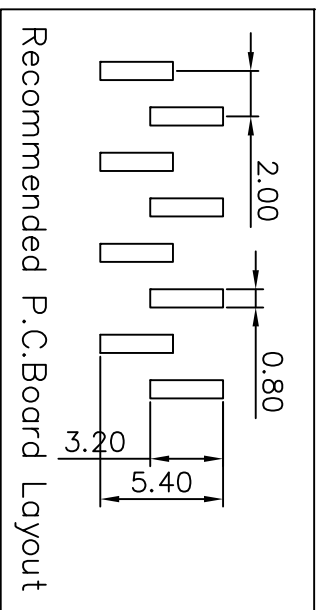


Number of pins X 2.00 ± 0.25



**Technical Specs:**

- Insulator: Black glass filled polyester PPS-GF30-FR
- Flammability: UL 94V-O
- Sleeve: Brass CuZn36Pb3 (C36000)
- Contact clip (4 finger): Beryllium copper (C17200)
- Mating pins: Outside Diameter 0.43 to 0.56 mm
- Forces: (polished steel gauge 0.51 mm)
- Insertion: 2 N typ.
- Withdrawal: 1 N typ.
- Mechanical life: min 500 cycles
- Rated current: 3 A
- Contact resistance: max 20 Milliohms
- Dielectric strength: min 1000 V RMS



Recommended P.C.Board Layout

		深圳市新世联电子有限公司 TEL: +86 (755) 29912370 FAX: 29912372	
Http://www.ciscom.com			
Tolerance Unless Otherwise Specified		Title	
.X ~ ±0.30		Units	2.0MM圆PIN排母 SMT
.XX ~ ±0.25		mm	Scale 2:1
.XXX ~ ±0.20		Date	REV NO. V0
Angle ~ ± 3°		Reviewed By	Approval By
		2023/02/22	Date