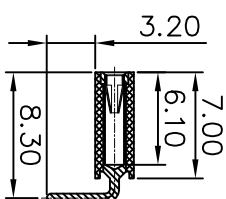
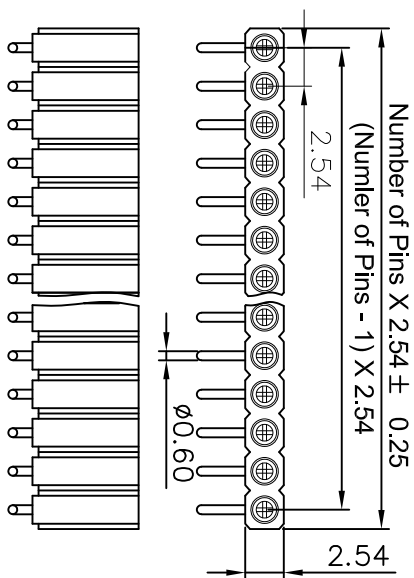
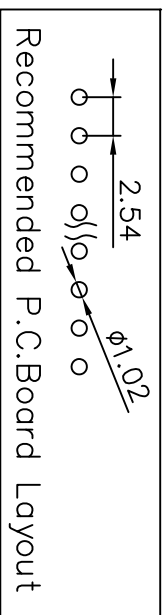


REV. NO.	REVISION NOTE	REVISER	DATE
V0	NEW DRAWING		2023/02/22

**Technical Specs:**

Insulator: Black glass filled polyester PPS-GF30-FR
 Flammability: UL 94V-O
 Sleeve: Brass CuZn36PB3 (C36000)
 Contact clip (6 finger): Beryllium copper (C17200)
 Mating pins: Outside Diameter 0.70 to 0.90 mm
 Forces: (polished steel gauge 0.64 mm)
 Insertion: 2 N typ.
 Withdrawal: 1 N typ.
 Mechanical life: min 500 cycles
 Rated current: 3 A
 Contact resistance: max 20 Milliohms
 Dielectric strength: min 1000 V RMS
 Coplanarity SMDterminations: max 0.1 mm
 (measured on 25 mm long connectors)



Http://www.ciscomn.com				深圳市新世联电子有限公司 TEL.:+86(755)29912370 FAX:29912372	
Tolerance Unless Otherwise Specified		Title		2.54MM PIN排母 RA	
.X ~ ±0.30			Units	Scale	REV NO.
.XX ~ ±0.25			mm	2:1	V0
.XXX ~ ±0.20		Angle ~ ± 3°	Drawing By	Reviewed By	Approval By
			2023/02/22		Date