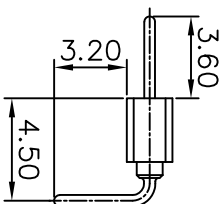
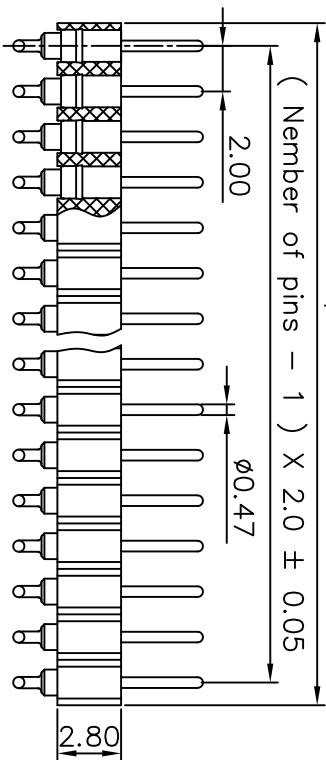
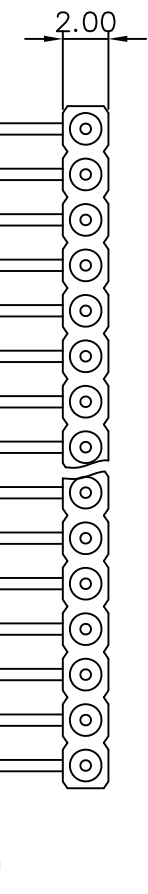
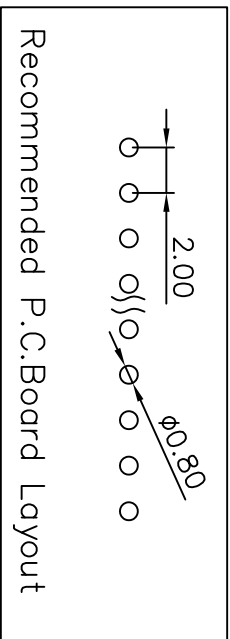


REV. NO.	REVISION NOTE	REVISER	DATE
V0	NEW DRAWING		2023/02/24



**Technical Specs:**

- Insulator: Black glass filled polyester PPS-GF30-FR
- Flammability: UL 94V-0
- Sleeve: Brass CuZn36Pb3 (C36000)
- Contact clip (4 finger): Beryllium copper (C17200)
- Mating pins: Outside Diameter 0.43 to 0.56 mm
- Forces: (polished steel gauge 0.51 mm)
- Insertion: 2 N typ.
- Withdrawal: 1 N typ.
- Mechanical life: min 500 cycles
- Rated current: 3 A
- Contact resistance: max 20 Milliohms
- Dielectric strength: min 1000 V RMS



Recommended P.C.Board Layout

4

3

2

1

		深圳市新世联电子有限公司 TEL: +86 (755) 29912370 FAX: 29912372	
Http://www.ciscomn.com			
Tolerance Unless Otherwise Specified		Title	
.X ~ ±0.30		2.0MM圆PIN排针 RA	
.XX ~ ±0.25		Units	Scale
.XXX ~ ±0.20		mm	2:1
Angle ~ ± 3°		Date	Reviewed By
		2023/02/24	
		Drawing By	Approval By
			Date
			Material No.

A

B

A

B

C

D