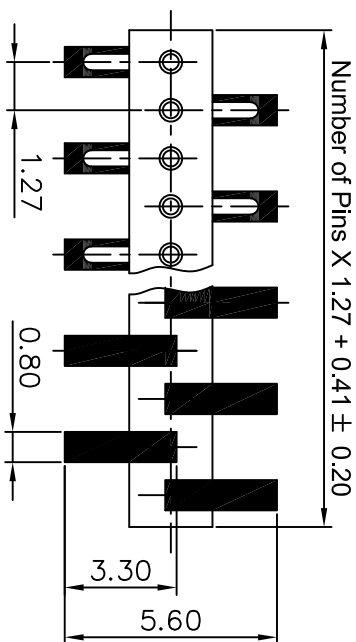
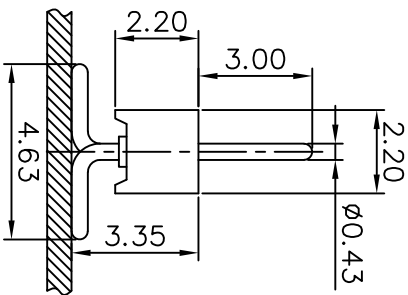





REV. NO.	REVISION NOTE	REVISER	DATE
V0	NEW DRAWING		2023/02/22



**Technical Specs:**

- Insulator: Black glass filled polyester PA46-GF30-FR
- Flammability: UL 94V-O
- Sleeve: Brass CuZn36Pb3 (C36000)
- Mechanical life: min 500 cycles
- Rated current: 1 A
- Contact resistance: max 20 Milliohms
- Dielectric strength: min 500 V RMS
- Coplanarity SMDterminations: max 0.1 mm  
(measured on 25 mm long connectors)

		深圳市新世联电子有限公司 TEL: +86 (755) 29912370 FAX: 29912372	
Http://www.ciscomm.com			
1.27MM圆PIN排针 SMT			
Tolerance Unless Otherwise Specified		Title	
.X ~ ±0.30		Units	Scale
.XX ~ ±0.25		mm	2:1
.XXX ~ ±0.20		Date	Reviewed By
Angle ~ ± 3°		2023/02/22	Date
Drawing By		Approval By	
		Date	
		Material No.	